

# BarZenith



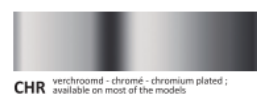
shell ignitability tested and classified according to **EN 1021:1** (cigarette) & 2 (match)



frame, epoxy



or chrome



CHR verchromd - chrome - chromium plated ; available on most of the models


shell :



- composition : PP-shell and steel-frame
- easy to clean
- the net weight is 7.3/7.4 kgs/pc (ht65/ht80)
- ht65 : width 51.5 cm, depth 56.5 cm, height 99.5, seat 65 cm
- ht80 : width 51.5 cm, depth 57.5 cm, height 114 cm, seat 80 cm
- it can bear at least 100 kgs (normal use)
- stackable : 8

- frame
- legs : dia 12 mm, S235JRC+AR, quality complies with EN10277-2, dimension according to EN10278
  - seat support : steel S235JR, quality complies with EN10025-5, dimension according to EN10278
  - support between front legs : tube 30 x 10 mm, tolerance according to EN10305-5, E220 + CR2 S3

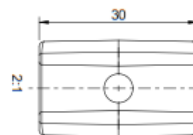
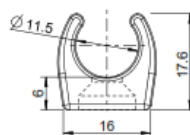
shell shell tested and classified according to EN 1021:1 (cigarette) & 2 (match) ignitability

General description		<b>Seatshell made of PP GF</b>			
Versatile, robust plastic seatshell. Using glass fibre reinforced Polypropylene guarantees superior properties at favourable material costs: high elasticity, impact strength and rigidity comes with contemporary design and neat, easy to clean surface. Advantages compared to alternatively commonly used materials like Polyamide, Polyurethane or compressed laminated wood are in particular the independence of moisture changes, any colouring, the favourable price and full recyclability. On request the shell is also available with additives for outdoor use and in special colours.					
	<b>Method</b>	<b>Unit</b>	<b>Value app.</b>	<b>Comments</b>	
<b>Mechanical properties</b>					
Tensile strength	ISO 527-2/1A	N / mm <sup>2</sup>	<b>50</b>		
Elongation at break	ISO 527-2/1A	%	<b>4</b>		
Flexural modulus of elasticity	ISO 178	MPa	<b>2.600</b>		
Impact strength / Charpy 23°C	ISO 179	KJ/m <sup>2</sup>	<b>10</b>		
<b>Thermal properties</b>					
Flame retardency	DIN 4102	/	<b>B2</b>	app. value, not certified	
Heat resistance	ISO306 / ISO 75-1	°C	<b>95</b>		
<b>Others</b>					
UV-stabilisation for outdoor use in central European climate	Sun Test in central European climate	Years	<b>5</b>	<u>optional set-up</u>	
Colour fastness	Wool-scale	--	<b>6-8</b>		
Chemical resistance		--	on request	typically for PP very good	
Disinfectant resistance	resistant against any common alcohol-based disinfectants				
Surface	fine texture on front face, matted on back face				
<b>Dimensions and mounting</b>	L x W x H: 490 x 436 x 430 mm 4 x bosses for direct screwing into plastic; distance length – cross 235 x 202 mm. Distance front bosses to front edge: 78 mm. <u>Tolerances across all colours: +/- 2 mm</u>				
<b>Assembly notes</b>	For mounting purpose we recommend screws for direct assembly into thermoplastic materials with nominal diameter of 6 mm (e.g. Ejot Delta PT 60). The screw length is depending on your specific frame situation. A screw-in depth of 10 <sup>-2</sup> mm is recommended. Don't hesitate to contact us for more information.				
The information given in this datasheet is based on our knowledge and latest experiences. Due to the numerous influencing factors that occur during processing and application of our products there can be no relief of own tests. Binding warranties of certain properties or the suitability for certain purposes may not be derived. It is the customer's responsibility to obtain trade mark rights and existing laws and regulations.					

screws *EJOT DELTA PT® für selbstfurchende Verschraubung in Thermoplaste*



glides



piling caps

white !

